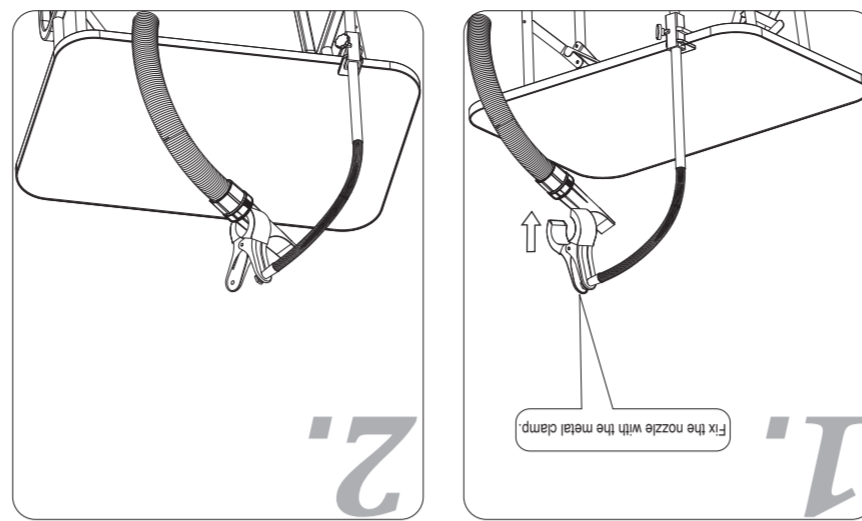
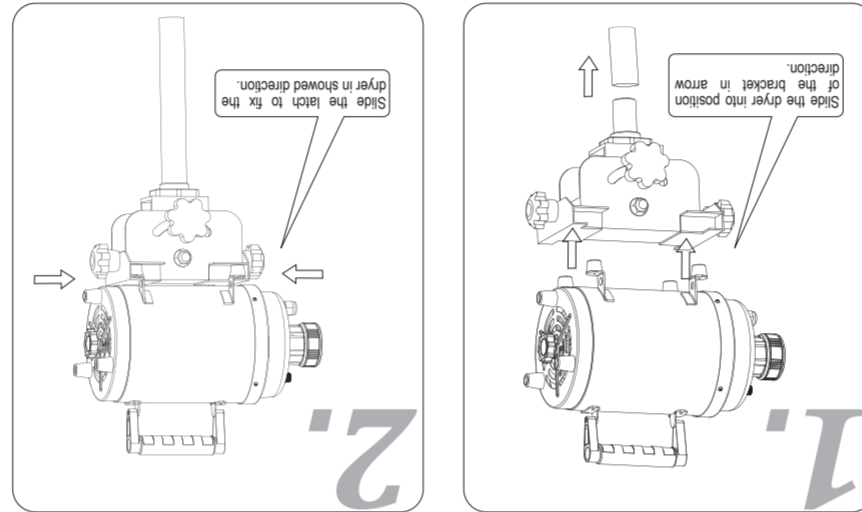


## Wall-mounting Bracket

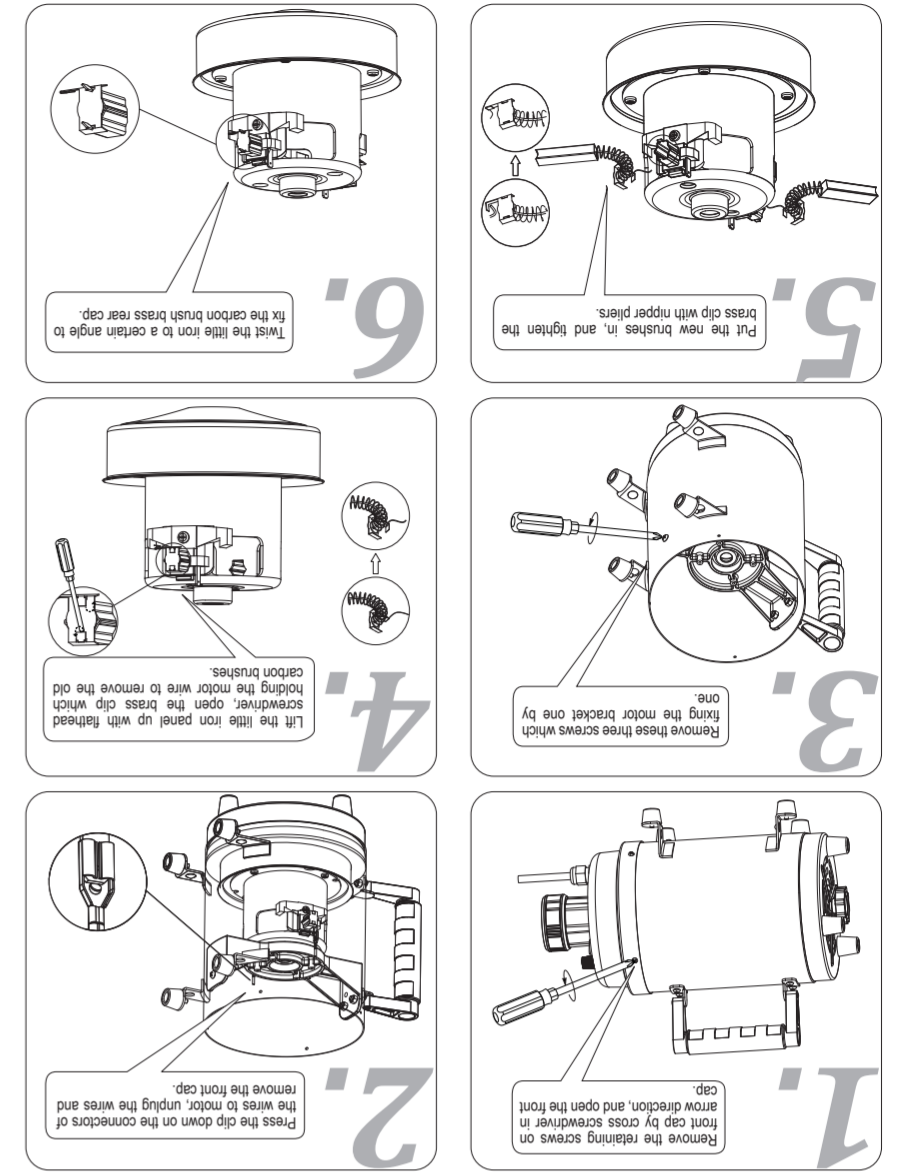


## Groomers' Third Arm



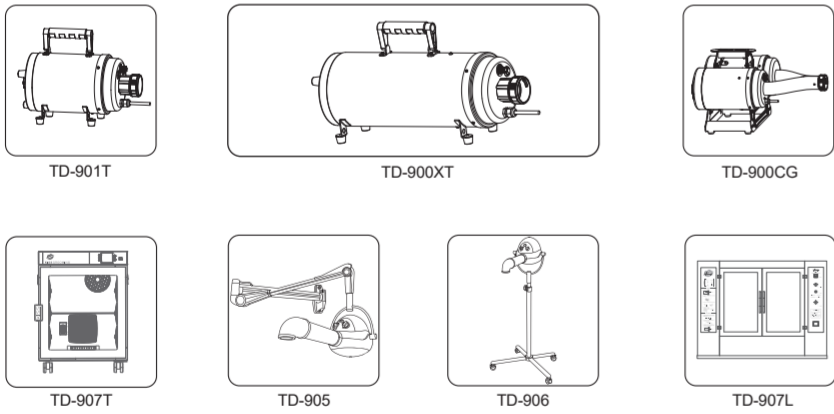
## Dryer Stand

※ The power supply must be cut off before changing carbon brushes.

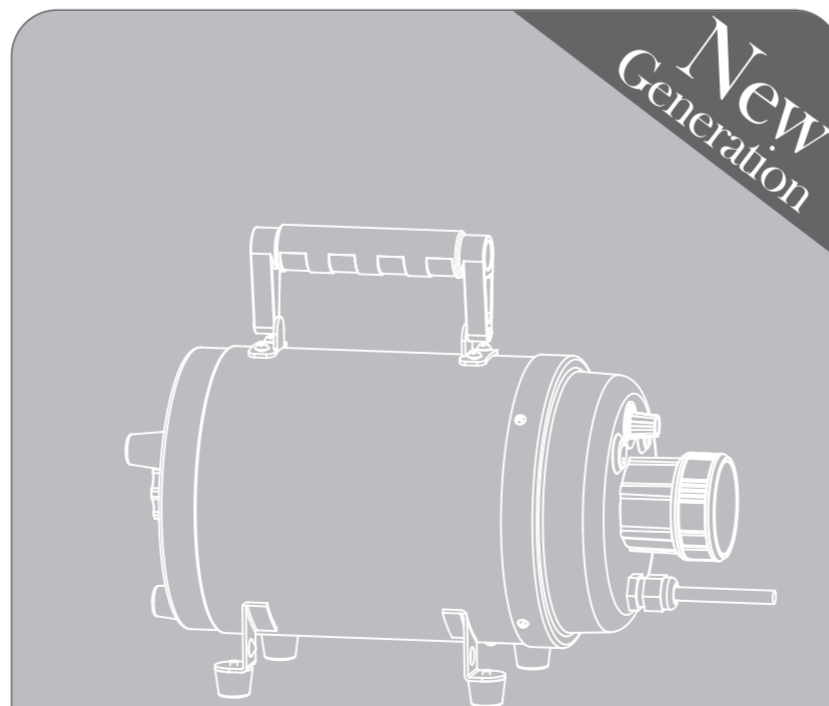


## Carbon Brush

**AEOLUS**  
Professional Pet Drying Equipments Supplier



Distributor Contacts



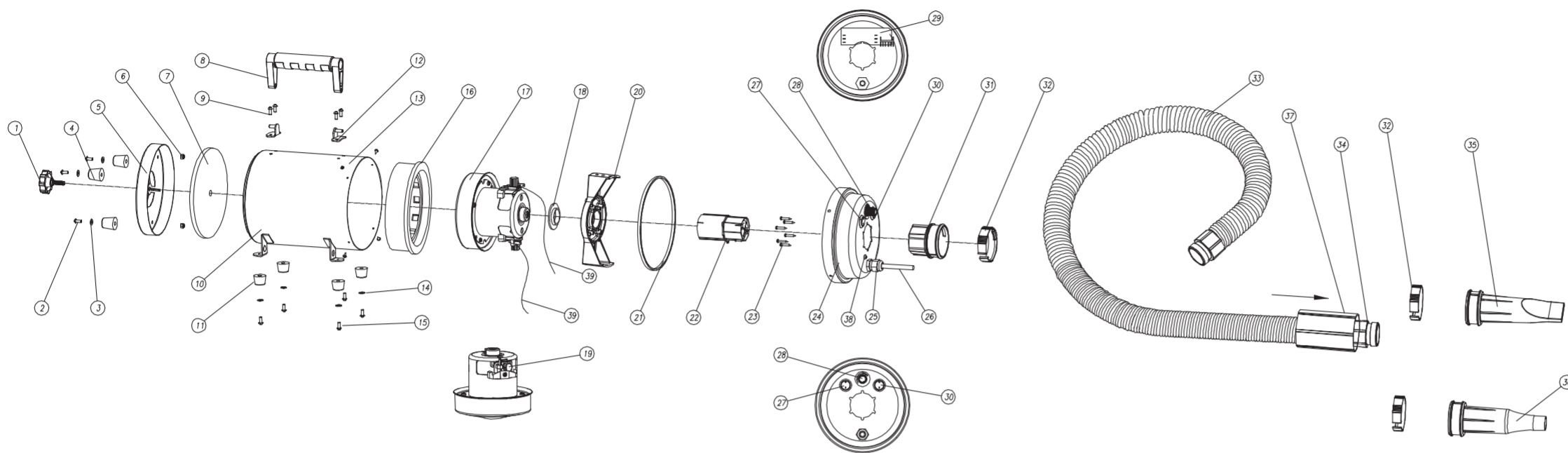
Owner's Guide

CE BGTCCODX15122021

**A**ce Class Wind Speed  
**E**xcellent Blow Force  
**O**ne-click Easy Operation  
**L**ong-lasting Carbon Brush & Motor  
**U**ltra Low Noise  
**S**ave Energy and Eco-friendly

Producer: Shanghai TOEX International Trading Co., Ltd.  
Address: Floor 5, Building 6, No.675 Zhujin Road,  
Songjiang District, Shanghai, 201615, China

Manufacturer: Shanghai Xunyuan Industrial Co., Ltd.  
Address: Lane 29, No.1509 East Qianming Road,  
Fengjing Town, Jinshan District, Shanghai.



Remarks: The chart is only for repair parts order references, the real structure should be subject to current available product, since we may make modifications without notice in formal written form.

Serial No.	Item No.	Part Name	Quantity
1	TD-90001	Rear Cap Fixture Knob	1
2	TD-90002	M4×10 Screw	3
3	TD-90003	Washer	3
4	TD-90004	Rear Cap Rubber Foot	3
5	TD-90005	Rear Cap	1
6	TD-90006	M4 Lock Nut	3
7	TD-90007	Foam Filter	1
8	TD-90008	Handle	1
9	TD-90009	M4×12 Screw and Nut	5
10	TD-90010	Short Housing	1
11	TD-90011	Housing Rubber Foot	4
12	TD-90012	Handle Set	2
13	TD-90013	PA3×8 Self-tapping Screw	4
14	TD-90014	Washer	4
15	TD-90015	M5×10 Screw	4
16	TD-90016	Vibration Absorber Ring	1
17	TD-90017	Motor B	1
18	TD-90018	Rubber Washer	1
19	TD-90019	Carbon Brush	2
20	TD-90020	Single Motor Fixture Bracket	1
21	TD-90021	Rubber Seal	1
22	TD-90022	Heating Element Assembly	1
23	TD-90023	PA3×16 Self-tapping Screw	6
24	TD-90024	Front Cap -A	1
25	TD-90025	PG-9 Waterproof Cable Connector	1
26	TD-90026	Power Cable	1
27	TD-90027	Heating Switch	1
28	TD-90028	Wind Speed Knob	1
29	TD-90029	PCB-A	1
30	TD-90030	Power Switch	1
31	TD-90031	Front Cap D52 Hose Connector	1
32	TD-90032	D52 Nylon Clip	3
33	TD-90033	D52 Flexible Hose	1
34	TD-90034	D52 Hose Connector	2
35	TD-90035	D52 Narrow Nozzle	1
36	TD-90036	D52 Round Nozzle	1
37	TD-90055	D52Heat Insulation Sleeve	1
38	TD-90065	M4×8 screw and nut	1
39	TD-90066	High temperature resistant silicone wire	1
		-A Brown, 0.75mm×200mm -B Blue, 0.75mm×200mm	1

## What makes CYCLONE dryer the best one in the world?

Our goal at AEOLUS is to ensure that we are the partner of choice for all your requirements in the pet industry. AEOLUS is committed to bringing you cutting edge technology at affordable prices, (so that all your needs are met).

We studied all the available dryer choices in the market and understand that there is a need for a machine that has a stronger blow force at a value price. Blow force is a more important parameter than just the wind speed, or air volume. Aeolus feels that the blow force parameter is a more important indicator of performance. Blow force is the critical factor. We are proud to offer this powerful feature, (currently not available in any other machine on the market).

Aeolus model TD-901T is our high performance model. Higher blow force, higher wind speed, lower noise, longer life span, more durable, and easier to operate and maintain.

### Super Blow Force

Years of research lead to the new 52mm diameter hose system. This is a much wider hose than previous models (which were 40mm), allowing for a higher blow force of 605grams<sup>1)</sup>, (an increase of 45%); and an unmatched wind speed of 60meters per second<sup>2)</sup> (an increase of 40%). In order to enhance the blow power we have enlarged the air intake vent 300%. These factors now allow an even stronger flow of air.

### Energy Savings

A better air flow system and a smaller flow friction force, has allowed AEOLUS TD-901T to perform at a high energy efficient ratio.

According to test results the TD-901T 1200 watt motor outperforms a 1600 watt dryer currently on the market.

AEOLUS TD-901T will allow for a 30% savings in energy consumption over previous models.

### Motor Life Span

AEOLUS TD-901T will allow for a much extended product life span. Based on the following points:

Longer carbon brush (lengthened from 32mm to 38mm; the longest currently on the market).

Smaller carbon pellets and a smoother rotor technology creates smaller sparks which gives the TD-901T a longer life span (increased by 30% compared to the previous model).

The result of this new motor technology will give the user 800 hours for one pair of carbon brushes, and can be changed an additional two times, to give a total performance time of 2,400 hours.

AEOLUS R & D technology has greatly improved the carbon brush spring (which prevents the spring from damaging the motor and in turn insures a longer life span of the product).

### Maintenance

AEOLUS has improved the component parts of the motor so that there is a more efficient way to open the housing of the machine (allowing for easy removal of all electrical components). TD-901T clip replacement technology in the motor, allows for a quicker and easier replacement of the carbon brush, and all component parts.

### Noise Performance

Advanced metal stretching technology in the TD-901T, has eliminated all welded seams, (on the front and rear caps of the machine and the main housing), leading to a fully sealed housing. thus reducing the noise emitted from the machine.

Test results show at the highest wind speed the noise emitted from the TD-901T is 83 decibels, (compared to the current industry standard of 100 decibels this is a 20% reduction), which provides for a more comfortable environment (and performance of the product).

### Safety Performance

The USA produced temperature switch, cuts the heating element of the TD-901T in 25ms, and begins working again after the core temperature of the heating element reduces to 85 degrees Celsius. This allows the TD-901T to perform at an output temperature of a maximum of 52 degrees Celsius<sup>3)</sup>.

TD-901T offers high temperature resistant silicone wires, high temperature resistant switch and circuit boards, an emergency cut off switch if a motor overheats. Durable ground wires provide safe performance.

### Ease of Use

Aeolus TD-901T easy use nozzle attachment allows the operator to remove the nozzle head with one finger, with a simple click of the attachment.

### Accessories

AEOLUS TD-901T has designed optional accessories for multi-use of the machine:

Wall mounting bracket

Groomers' third arm

Dryer Stand

Please check instruction manual for further details.

### Testing Condition:

1) 2.5m long flexible hose, Φ16mm round nozzle, fixed above the high precision electronic scale at 220mm, record the blow force indication.

2) 2.5m long flexible hose, Φ16mm round nozzle, fixed at the distance of 180mm to the center of wind cup, record the wind speed indication.

3) 52 C means the sensor fixed at the position of 3cm away from the end of round nozzle never takes a value higher than 52 C in a 3 hours continuous testing, when the environmental temperature is at 32 C.

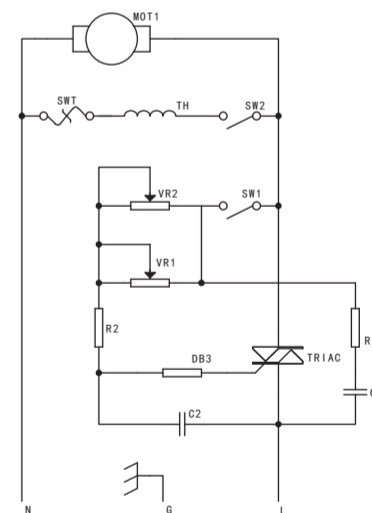
Remarks: all the testing is executed on professional testing platforms.

## Parameters

Product Name	CYCLONE	Item Number	TD-901T
Rated Voltage	100V -120V (50Hz-60Hz)	Blow Force	605g
Rated Current (110V)	16.4A	Maximum Wind Speed	60m/s
Maximum Power (110V)	1800W	Minimum Wind Speed	27m/s
Heating Power	600W	Noise (on back of the dryer at 0.5m)	94dba
Maximum Temperature (Environmental Temperature at 32 C)	52 C	Noise (on top of the dryer at 0.5m)	83dba
Net Weight	4.3kg	Gross Weight	5.1kg
Product Dimension (Flexible Hose not Included)	340×160×210mm	Packing Dimension (L×W×H)	450×300×230mm
Class	0		

### Remarks:

- The parameters are tested with 2.5m long flexible hose and Φ16mm round nozzle.
- We may not publish formal notice in written form when the parameters changed after new improvements.
- The manufacturing standards and testing stands subject to TOEX company standard: TXPS-ALPD-0901(T)-2011.



## Direction for Use

- Attach the flexible hose to the front cap connector.
- Plug into socket, switch power on.
- Adjust wind speed, turn on or off the heating switch and choose suitable nozzle according to your need.
- Turn the wind speed knob back to Minimum, turn off the heating switch and then turn off the power switch after use.

## Maintenance

- Please clean the foam filter (by washing or air blowing). Reinstall filter again when it's dry.
- Keep the surface clean and dry, and use a dry soft cloth to clean the painted surface.
- Wet cloth with neutral detergent and wipe to remove stubborn stains and dirt.
- Use only mild neutral detergent.
- When the carbon brushes wear down replace the brushes following the guide line in this booklet or consult with the professionals.

## Safety Instruction

- Pet dryer needs a single outlet which is at least 10Amps and a dedicated ground wire. Please connect pet dryer with a correct outlet and do not share with other appliances.
- Before turning on or off, please adjust the wind and temperature to the low. This can extend the life of the machine.
- Do not insert pins or any metal objects into the machine. This will prevent electric shock and short circuiting.
- Do not use a cloth or bag to muffle the diffuser or foam filter. This could damage the machine.
- If the machine has been used for some time and a malfunction occurs, you should ask a professional to repair it. Do not disassemble by yourself.
- If the power cord is damaged, discontinue use and have repaired by a professional.
- Please keep children away when you operate the machine.
- Dropping or heavily banging or hitting the machine could damage the frame and motor.
- People with pacemakers or heart ailments should not operate this machine.
- Please hold the nozzle and hose firmly before turning the machine on, or the hose may wiggle and cause injury.
- Must plug hose into the front cap connector before turning the machine on.
- It's strictly forbidden to touch the components in the front cap connector with hand or any other objects in any situation.
- Appliance is not intended for use by persons (including children) with reduced physical, sensory or mental capabilities, or lack of experience and knowledge, unless they have been given supervision or instruction concerning use of the appliance by a person responsible for their safety.
- Children should be supervised to ensure that they do not play with the appliance.
- If the supply cord is damaged, it must be replaced by the manufacturer or service agent or a similarly qualified person.