

AEOLUS

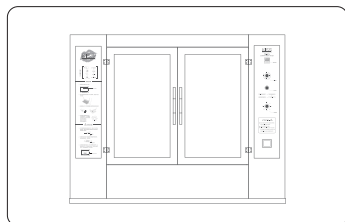
Professional Pet Drying Equipments Supplier



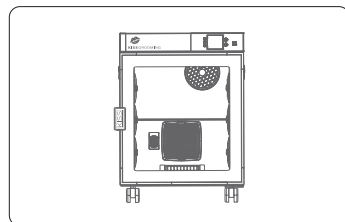
AEOLUS

AEOLIAN

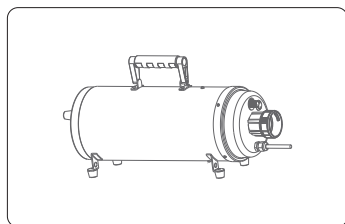
TD-901GT-Pro



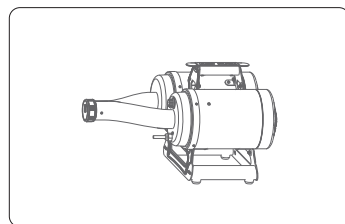
TD-907



TD-907T



TD-900XT



TD-900CG

Distributor Contacts



AEOLUS

Producer: Shanghai TOEX International Trading Co., Ltd.
Address: Floor 5, Building 6, No.675 Zhujin Road,
Songjiang District, Shanghai, 201615, China

Manufacturer: Shanghai Xunyun Industrial Co., Ltd.
Address: Lane 29, No.1509 East Qianming Road,
Fengjing Town, Jinshan District, Shanghai.

New
Generation



User Manual

A dryer we have nothing else to entitle but AEOLIAN

The wind speed and blow force is dramatically different in single motor and dual motor dryers. As powerful as our TD-901T Cyclone single motor dryer is, it can't compare to our Dual Motor Hercules TD-900XT. Hercules double motor dryer measures 955g of blow force; 605g for Cyclone. Our aim was to create a single motor dryer that bridged the gap. We worked on this for a few years, and in 2012 the problem was solved. We created an incredibly powerful single motor dryer which can even match Hercules in both wind speed and blow force. Thus the aptly named AEOLIAN was created.

Super Blow Force

895g[®] of super blow force, is what AEOLIAN produces. No other single motor dryer comes close. Most dual motor dryers in the market perform at the average level of 780 -850g blow force, which to say Monster has already beaten them and just slightly less forceful than our own double motor dryer, Hercules (TD-900XT). 90m/s² is a new level of performance in this field.

Better Mobility

It is a AEOLIAN of performance in a compact, lightweight body. 6kg (even more), this 4.7kg portable single dryer is the ideal choice for all. There are two options for flexibility of use; a stand and wall mount. They both provide hands free usage and leave the work space free for grooming.

Motor Life Span

The enlarged surface area of the 32mm carbon brush helps to extend the lifespan by 20%. The bigger motor (with stronger torque and slower rotation speed) generates much more wind volume than average motors do; (and helps to extend its own life by rotating less).

Maintenance

If you compare AEOLIAN with a dual motor dryer, you will find you are saving labor cost, time and money on the maintenance of AEOLIAN. One pair of carbon brushes need to be changed after about 800 service hours (rather than 2 pairs as on a dual motor dryer). Much Simpler internal structure and less wiring translate to less time devoted to maintenance.

Noise Control

As strong and powerful as the AEOLIAN is, it remains remarkably quiet. It's only 79dbA when noise dosimeter is positioned above Monster.

Safety Performance

The USA produced temperature switch, cuts the heating element of the TD-901GT-Pro in 25ms, and begins working again after the core temperature of the heating element reduces to 85 degrees Celsius, which allows the TD-901GT-Pro to perform at an output temperature of a maximum of 52 degrees Celsius[®]. TD-901GT-Pro has high temperature resistant silicone wiring, switch and circuit boards. The emergency cut off switch responds readily if perchance a motor were to overheat.

Ease of Use

AEOLUS TD-901GT-Pro has a proprietary easy use nozzle attachment which allows the operator to remove the nozzle head with the use of just one finger, with a simple click of the attachment. Aeolus TD-901GT nozzle allows reattachment of nozzle head with just one click.

A dryer we have nothing else to entitle but AEOLIAN

Parameters

Circuit Diagram

Accessories

AEOLUS TD-901GT-Pro options include:

- Wall mounting bracket
- Groomers' third arm
- Dryer Stand

Please check instruction manual for further details

Direction for Use

1. Plug the flexible hose to the front cap connector.
2. Plug in socket with right voltage, switch power on.
3. Adjust wind speed, turn on or off the heating switch and choose suitable nozzle according to your need.
4. Turn the wind speed knob back to Minimum, turn off the heating switch and then turn off the power switch after usage.
5. Unplug the dryer from the mains, unplug the hose and nozzle, and put the machine and accessories back to box.

Maintenance

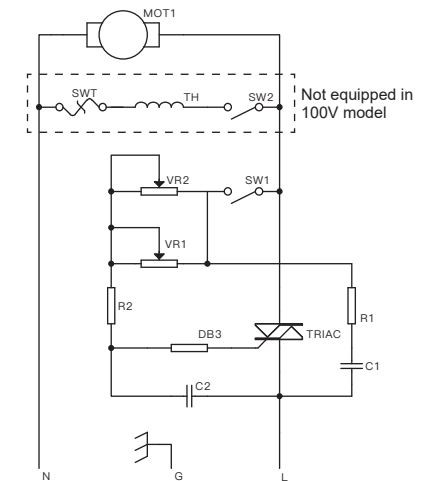
1. Please clean the sponge filter by washing or air blowing, be sure to fix the filter again when it's dry.
2. Keep the surface clean and dry, and use a dry and soft cloth to clean the painted surface.
3. Wet cloth with neutral detergent and wipe to remove stubborn stains and dirt.
4. Use only mild neutral detergent.
5. When the carbon brushes run out, please renew the brushes following the guide line in this booklet or consult with the professionals.

Correct Disposal of this product

This marking indicates that this product should not be disposed with other household wastes throughout the EU. To prevent possible harm to the environment or human health from uncontrolled waste disposal, recycle it responsibly to promote the sustainable reuse of material resources. To return your used device, please use the return and collection systems or contact the retailer where the product was purchased. They can take this product for environmental safe recycling.



Product Name	AEOLIAN TD-901GT-Pro	
Rated Voltage	220V / 50Hz	110V/60Hz
Blow Force	890g	720g
Rated Current	10A	18.2A
Maximum Power	2200W	2000W
Maximum Wind Speed ^①	192m/s	156m/s
Heating Power	600W	600W
Net Weight	5.8kg	
Gross Weight	6.5kg	
Product Dimension (Flexible Hose not Included)	410×170×250mm	
Packing Dimension (L×W×H)	507×297×266mm	
Class	0	



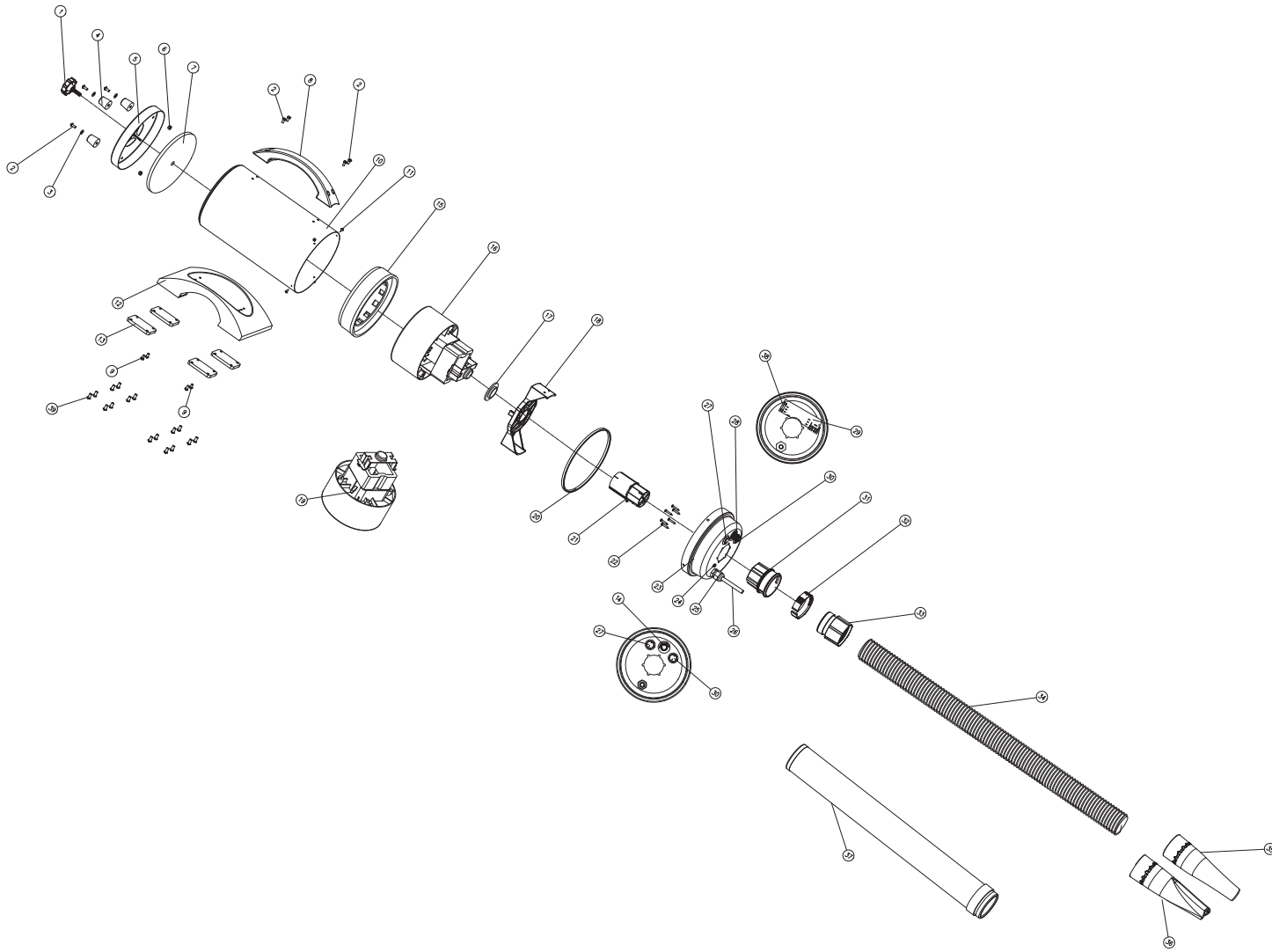
Remarks:

- ①. We cannot find any anemoscope to measure the real wind speed of this TD-901GT dryer, between the another single motor dryer CYCLONE in our line and TD-901GT-Pro.
 1. The parameters are tested with 2.5m long flexible hose and Φ16mm round nozzle.
 2. We may not publish formal notice in written form when the parameters changed after new improvements.
 3. The manufacturing standards and testing stands subject to TOEX company standard: TXPS-ALPD-0901(T)-2012.

Safety Instruction

1. Pet dryer needs a single outlet which is at least 10A and has ground wire for itself. Please connect pet dryer with a correct outlet and do not share with other appliances.
2. Before switch on or turn off the power every time, please adjust the wind and temperature to the lowest, this can extend the lifetime of the machine.
3. Do not insert pins or any metal things into the clearance of the machine, otherwise that would be easy to get an electric shock and short circuit.
4. Do not use a cloth or bag to stop the diffuser or foam filter; otherwise it would damage the machine.
5. If the machine has been used for some time and a malfunction occurs, you must ask the professional person to repair it. Do not disassemble by yourself.
6. If the power cord is damaged, discontinue use and have repaired by a professional.
7. Please keep children away when you operate the machine.
8. Do not hit the housing with fierce shock or drop the machine from high, which will damage the frame and motor.
9. Cardiopath or people with pacemaker are forbidden to use this machine.
10. Please hold the nozzle and hose firmly before turning the machine on, or the hose may wiggle and cause injury.
11. Must plug hose into the front cap connector before turning the machine on.
12. It's strictly forbidden to touch the components in the front cap connector with hand or any other objects in any situation.
13. Appliance is not intended for use by persons (including children) with reduced physical, sensory or mental capabilities, or lack of experience and knowledge, unless they have been given supervision or instruction concerning use of the appliance by a person responsible for their safety.
14. Children should be supervised to ensure that they do not play with the appliance.
15. If the supply cord is damaged, it must be replaced by the manufacturer or its service agent or a similarly qualified person in order to avoid a hazard.

Structure Chart



Remarks: The chart is only for repair parts order references, the real structure should be subject to current available product, since we may make modifications without notice in formal written form.

Serial No.	Item No.	Part Name	Quantity
1	TD-90001	Rear Cap Fixture Knob	1
2	TD-90009	M4×12 Screw and Lock Nut	3
3	TD-90003	Washer	3
4	TD-90004	Rear Cap Rubber Foot	3
5	TD-90005	Rear Cap	1
6	TD-90006	M4 Lock Nut	3
7	TD-90007	Foam Filter	1
8	TD-90008-C	Handle for TD-901GT-PRO	1
9	TD-90163	M4×10Screw	2
10	TD-90167-PBL TD-90167-CRD	Housing-(Purple Blue) Housing-(Chinese Red)	1
11	TD-90013	PA3×10 Self-tapping Screw	4
12	TD-90168	Handle, Short Arch Base	1
13	TD-90169	Small Rubber Foot for Short Arch Base	4
14	TD-90054-YLW	Potentiometer Insulation Cap (Pair)-Yellow	1
15	TD-90172	Rubber Washer for AMETEK 5.7" Double Stage Motor	1
16	TD-90019-AM1STG-220V TD-90019-AM1STG-110V	AMETEK Double Stage Motor,5.7" Type (1600W, 220V) AMETEK Double Stage Motor,5.7" Type (1400W,110V)	1
17	TD-90018	Rubber Washer for AMETEK 5.7" Double Stage Motor	1
18	TD-90166	Single Motor Fixture Bracket for AMETEK 5.7" Motor	1
19	TD-90019-AM2STG-57	Carbon Brush	1
20	TD-90021	Rubber Seal	1
21	TD-90022-220V TD-90022-110V	Heating Element Assembly(220V, 600W) Heating Element Assembly(110V, 600W)	1
22	TD-90023	PA3×16 Self-tapping Screw	6
23	TD-90024	Front Cap	1
24	TD-90065	M4×8Screw	1
25	TD-90025	PG9 Waterproof Cable Connector	1
26	TD-90026	Power Cable	1
27	TD-90027	Heating Switch	1
28	TD-90028-YLW TD-90028-BLU	Wind Speed Knob with Insulating Cover-Yellow- matched with TD-90167-CRD Wind Speed Knob with Insulating Cover-Blue- matched with TD-90167-PBL	1
29	TD-90173-220V TD-90173-110V	PCB Type I-220V PCB Type I-110V	1
30	TD-90030	Power Switch	1
31	TD-90031	Front Cap D52 Hose Connector	1
32	TD-90032	D52 Nylon Clip	1
33	TD-90033-250-BLK	D52 Flexible Hose-250cm-Black	1
34	TD-90034	D52 Hose Connector	1
35	TD-90118-RED TD-90118-BLK	Inclined Round Nozzle-RED-matched with TD-90167-CRD Inclined Round Nozzle-BLACK-matched with TD-90167-PBL	1
36	TD-90119-RED TD-90119-BLK	Concave Narrow Nozzle-RED-matched with TD-90167-CRD Concave Narrow Nozzle-BLACK-matched with TD-90167-PBL	1
37	TD-90117-AEOLUS TD-90132-20A-220V	Heat Insulation Sheath-AEOLUS Fuse 220V, 20A	1
38	TD-90132-30A-110V	Fuse 110V, 30A	1
39	TD-90124	M6x12 Screw	16