

AEOLUS

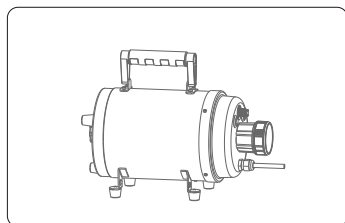
Professional Pet Drying Equipments Supplier



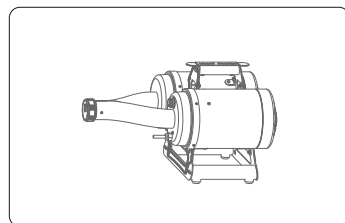
AEOLUS

PET DRYER

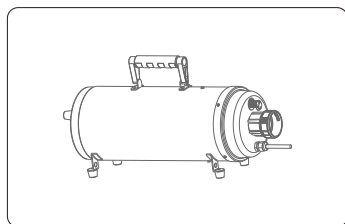
TD-941NOVA



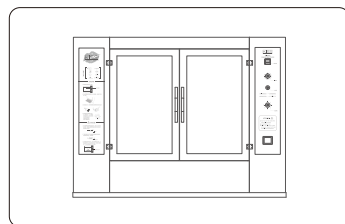
TD-901GT



TD-900CG



TD-900XT



TD-907L

Distributor Contacts

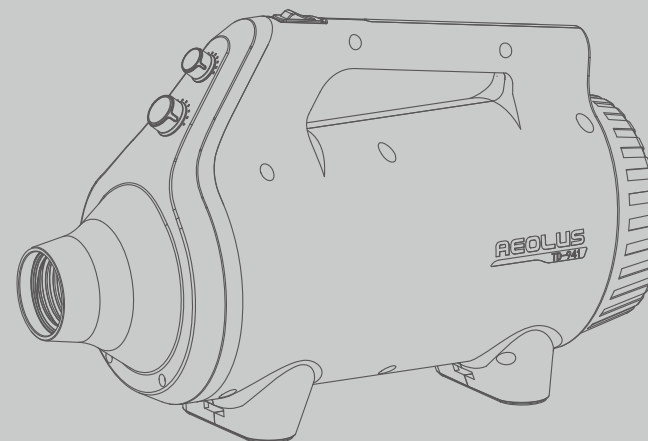


AEOLUS

Producer: Shanghai TOEX International Trading Co., Ltd.
Address: Floor 5, Building 6, No.675 Zhujin Road,
Songjiang District, Shanghai, 201615, China

Manufacturer: Shanghai Xunyun Industrial Co., Ltd.
Address: Lane 29, No.1509 East Qianming Road,
Fengjing Town, Jinshan District, Shanghai.

New
Generation



User Manual

CE BGTCVAQX01112021

Brief Introduction

Thank you for purchasing our products!

This dryer is an innovative brushless pet dryer, professional for pet grooming.

Large air volume, fast wind speed, high mechanical efficiency, and long service life.

Self-cooling nozzle ensures a safe and comfortable holding experience.

Two nozzles meet different blowing needs: The crescent-shaped flat nozzle is suitable for quick drying the pets' slender parts such as legs and tails; the round nozzle with a special inclined end will not only be used in regular direct blowing, but can also play a guiding role in drying the abdomen and other parts that are not easy for direct touch.

The addition of a 50cm-long super-strength insulation sheath ensures the safety of the pet groomers by avoiding the risk of "low temperature burns" on their front arms.

Zero-leakage shell and low noise.

Overheat protection Heater.

Controllable Wind Speed & Adjustable Heating

Easy maintenance and cleaning.

Parts List

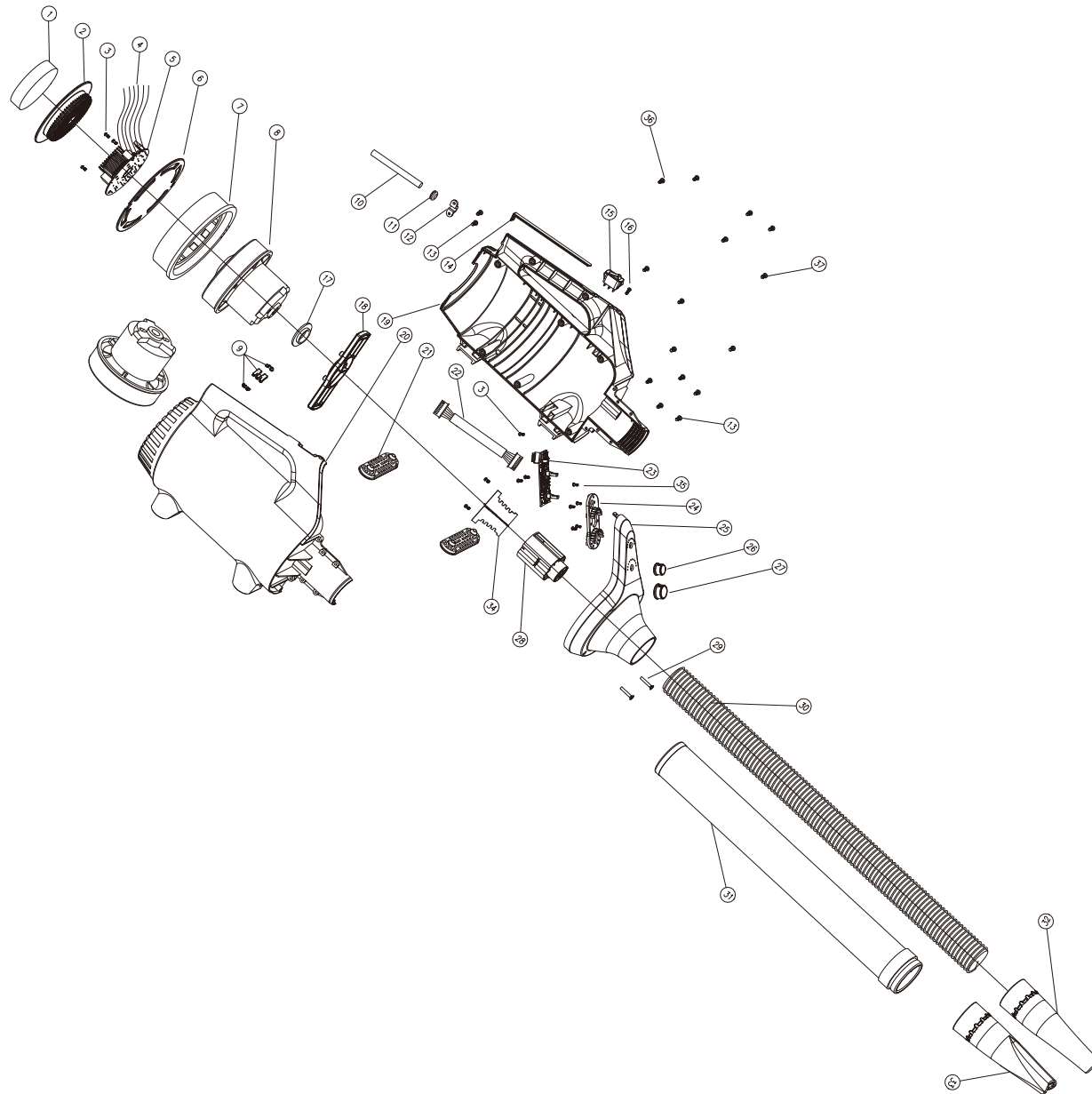
1 Dryer

1 Hose

1 Sheath

2 Nozzles (flat and round)

Structure Chart



Serial No.	Item No.	Part Name	Quantity
1	TD-90093	Foam Filter (TD-941 series)	1
2	TD-90094	Plastic Air Intake Filter	1
3	TD-90143	PA3×8 Self-tapping Screw with washer integrated	7
4	TD-90066	Internal Wire Kit (sometimes combined into PCB assembly)	1
4	TD-90066	Internal Wire Kit (sometimes combined into PCB assembly)	1
4	TD-90066	Internal Wire Kit (sometimes combined into PCB assembly)	1
4	TD-90066	Internal Wire Kit (sometimes combined into PCB assembly)	1
4	TD-90066	Internal Wire Kit (sometimes combined into PCB assembly)	1
4	TD-90066	Internal Wire Kit (sometimes combined into PCB assembly)	1
4	TD-90066	Internal Wire Kit (sometimes combined into PCB assembly)	1
5	TD-90096	PCB-H (TD941NOVA)	1
6	TD-90097	Rear Separator Panel	1
7	TD-90150-GT	Vibration Absorber Ring for GT type Motor	1
8	TD-90098	TD-941NOVA Brushless Motor	1
9	TD-90157	Cable Clip(pair) between TD-941 Left/Right Housings	1
10	TD-90026	Power Cable	1
11	TD-90100	Power Cable Protective Ring	1
12	TD-90101	Cable Clamp	1
13	TD-90144	PA4×12 Self-tapping Screw with washer integrated	8
14	TD-90103-RED	Decorative Strip-RED	1
15	TD-90104	Power Switch (TD-941 series)	1
16	TD-90160	PA3x8 Self-Typing Screw for TD-941 Handle	1
17	TD-90018	Rubber Washer	1
18	TD-90106-941NOVA	Single Motor Fixture Bracket(TD-941T-NOVA series)	17
19	TD-90107-BLK	TD-941 Left Housing-BLK	1
20	TD-90108-BLK	TD-941 Right Housing-BLK	1
21	TD-90109	Rubber Foot	2
22	TD-90110-NOVA	Control Signal Cable-NOVE	1
23	TD-90111-941NOVA	Control Circuit Board, suits for TD-941NOVA Series	1
24	TD-90112	Light Pipe Assembly	1
25	TD-90113-BLK	TD-941 Front Cap-BLK	1
26	TD-90114	Heating Knob	1
27	TD-90115	Wind Speed Knob	1
28	TD-90139	Heating Element Insulation Sleeve for TD-941 Series	1
29	TD-90116	M4x25 Flat-head Cross Screw	2
30	TD-90033-250-RED	D52 Flexible Hose-250cm-RED	1
31	TD-90117-AEOLUS	Heat Insulation Sheath-AEOLUS	1
32	TD-90118-BLK	Inclined Round Nozzle-BLK	1
33	TD-90119-BLK	Concave Narrow Nozzle-BLK	1
34	TD-90137	Heating Element Assembly for TD-941 Series	1
35	TD-90092	PA3x10 Self-tapping Screw	5
36	TD-90145	PA4×16 Self-tapping Screw with washer integrated	2
37	TD-90146	PA4×20 Self-tapping Screw with washer integrated	6

Safety Instruction

1. Pet dryer needs a single outlet which meets the requirements and has ground wire for itself. Please connect pet dryer with a correct outlet and do not share with other appliances.
2. Before switch on or turn off the power every time, please adjust the wind and temperature to the lowest, which can extend the lifetime of the machine.
3. Do not insert pins or any metal things into the clearance of the machine to avoid an electric shock and short circuit.
4. Do not use a cloth or bag to stop the diffuser or foam filter or it will do damage the machine.
5. If the machine has been used for some time and a malfunction occurs, you must ask the professional person to repair it. Do not disassemble by yourself.
6. If the power cord is damaged, discontinue use and have repaired by a professional.
7. Please keep children away when you operate the machine.
8. Do not hit the housing with fierce shock or drop the machine from high, which will damage the frame and motor.
9. Cardiopath or people with pacemaker are forbidden to use this machine.
10. Please hold the nozzle and hose firmly before turning the machine on, or the hose may wiggle and cause injury.
11. Must plug hose into the front cap connector before turning the machine on.
12. It's strictly forbidden to touch the components in the front cap connector with hand or any other objects in any situation.
13. The appliance is not intended for use by persons (including children) with reduced physical, sensory or mental capabilities, or lack of experience and knowledge, unless they have been given supervision or instruction concerning use of the appliance by a person responsible for their safety.
14. Children should be supervised to ensure that they do not play with the appliance.
15. If the supply cord is damaged, it must be replaced by the manufacturer or its service agent or a similarly qualified person in order to avoid a hazard.
16. To avoid electric shock, the power distribution box should be equipped with a leakage protector.
17. Do not use the product near water or in a wet or damp place. Keep away from the wet places such as the bathtub, the sink, and anything else related with water.

Operation Instruction

1. Plug the flexible hose into the front cap connector. Choose and install a suitable nozzle according to your need.
2. Plug in the socket with correct voltage, switch power on.

3. Rotate the wind speed knob to adjust the wind speed. Rotate the heating knob to adjust the wind temperature.
4. Turn the wind speed knob back to minimum, turn the heating knob back to minimum and then turn off the power switch after usage.
5. Unplug the dryer from the mains, unplug the hose and nozzle, and put the machine and accessories back to box.
6. When you restart the dryer when the machine is just off and the motor is still rotating, some shaking or pause sound may be heard, which is caused by sensitive response and fast revolutions of the brushless fan. It is normal. Therefore, it is recommended that users should switch on and off slowly to ensure the stable operation of the motor.
7. If the motor does not work, please turn off the power switch, turn on and rotate the wind speed knob until the wind speed indicator light goes off. Turn on the power switch, see the heating indicators light flash for one cycle, and turn on the motor after self inspection.
8. The heating switch can only be turned on when the motor is turned on and one wind speed indicator lights up.

Maintenance

1. Please clean the sponge filter by washing or air blowing, be sure to fix the filter again when it's dry.
2. Keep the surface clean and dry, and use a dry and soft cloth to clean the surface.
3. Wet cloth with neutral detergent and wipe to remove stubborn stains and dirt.
4. Use only mild neutral detergent.
5. For brushed dryers, when the carbon brushes run out, please renew the brushes following the guide line in this booklet or consult with the professionals.

Correct Disposal of This Product

This marking indicates that this product should not be disposed with other household wastes throughout the EU. To prevent possible harm to the environment or human health from uncontrolled waste disposal, recycle it responsibly to promote the sustainable reuse of material resources. To return your used device, please use the return and collection systems or contact the retailer where the product was purchased. They can take this product for environmental safe recycling.



Parameters

Product Model	TD-941NOVA	TD-941NOVA
Rated Voltage / Frequency	220V, 50Hz	110V, 60Hz
Rated Current	10	18.2
Maximum Power	2200W	2000W
Motor	Brushless	Brushless
Heating Power	600W	
Noise	80 decibels	
Net Weight	4.7kg	
Gross Weight	5.4kg	
Product Dimension	415x166x268mm	
Packing Dimension	465x320x245mm	